



# Model M1040 & M1041 Plate Shear Instruction Sheet

## Inventory

Plate Shear Assembly .....	1
Hex Bolts M10-1.5 X 40 (M1040) .....	2
Hex Bolts M12-1.75 X 40 (M1041) .....	2
Flat Washers 10mm (M1040) .....	2
Flat Washers 12mm (M1041) .....	2
Handle .....	1

## Shearing Dimensions (Mild Steel)

Maximum Shear Thickness ..... 7 gauge ( $3/16"$ )  
 Maximum Rod Diameter (Rebar/All Thread) .....  $1/2"$

**Note:** *DO NOT attempt to shear hardened or stainless steel. You will damage or break your shear blades!*

## Assembly and Mounting

To assemble and mount your shear, do these steps:

1. Secure the handle to the plate shear assembly using the included hex bolts and flat washers, as shown in the parts diagram on the next page.
2. Place the shear on the workbench, and use the holes in the base as a guide for drilling and attaching the shear to the workbench.
3. We recommend using through bolts (hex bolts that go through the workbench and are secured from the other side with flat washers and hex nuts) if possible. If it is not possible to use through bolts, use lag screws with flat washers and fasten the lag screws directly into the workbench.

## Basic Operation

To perform basic shearing operations, do these steps:

1. Raise the threaded stop if needed to allow room for the workpiece.
2. Turn the stop so the stop pad is firmly pressing the workpiece against the lower blade.
3. With slow and even pressure, pull the handle down to cut the workpiece.



Figure 1. Model M1040 and M1041 Plate Shears.

## **⚠WARNING**

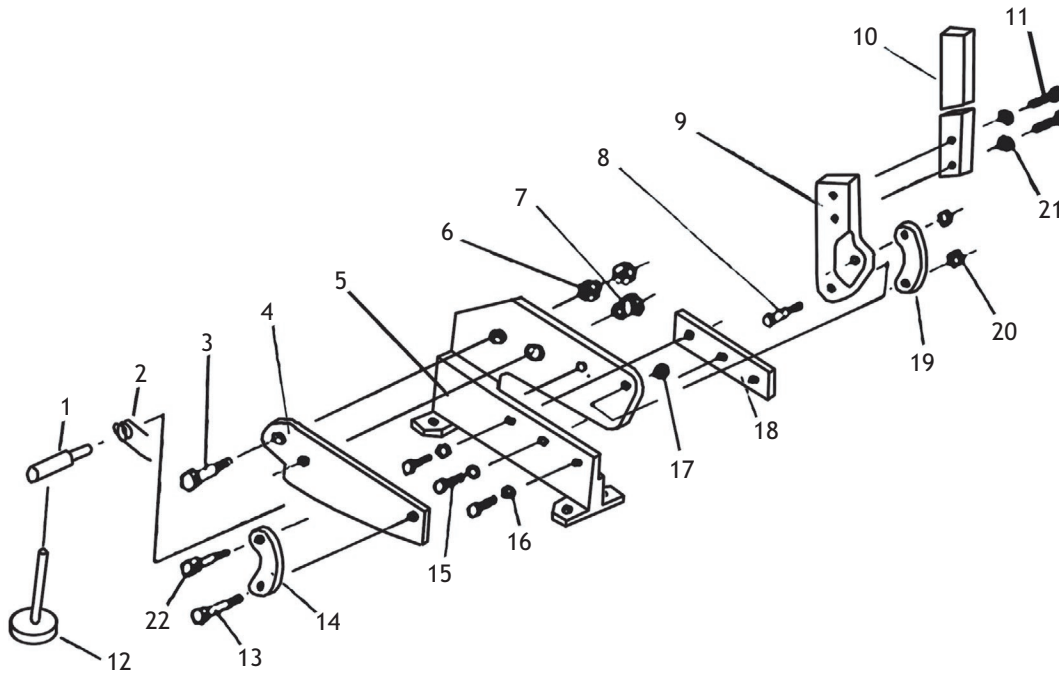
The shear blades are very sharp! Keep body parts away from the cutting area, or serious injury may result!

*Note: If the material seems too thick or too hard, do not force the shear! Instead, use a metal-cutting bandsaw to cut the workpiece.*

## Maintenance

- Always keep blades lubricated with a light oil.
- Keep pivot points tight.
- Check mounting fasteners and all shear hardware before every use for loose or worn components.

# M1040-41 Parts Breakdown



## M1040 Parts List

## M1041 Parts List

REF	PART #	DESCRIPTION
1	XM1040001	SPRING SUPPORT ROD
2	XM1040002	TORSION SPRING
3	XM1040003	SPECIAL HEX BOLT M14-1.5 X 40
4	XM1040004	UPPER BLADE 8"
5	XM1040005	SHEAR BODY (M1040)
6	XPN42M	HEX NUT M14-1.5
7	XM1040007	BLADE FIXING PIN
8	XM1040008	SPECIAL HEX BOLT M10-1.5 X 50
9	XM1040009	HANDLE MOUNTING PLATE
10	XM1040010	HANDLE
11	XPB31M	HEX BOLT M10-1.5 X 40
12	XM1040012	THREADED STOP M12-1.75 X 165
13	XM1040013	SPECIAL HEX BOLT M8-1.25 X 40
14	XM1040014	PIVOT ARM
15	XPB74M	HEX BOLT M10-1.5 X 20
16	XPW04M	FLAT WASHER 10MM
17	XPN02M	HEX NUT M10-1.5
18	XM1040018	LOWER BLADE 8"
19	XM1040019	PIVOT ARM
20	XPN03M	HEX NUT M8-1.25
21	XPW04M	FLAT WASHER 10MM
22	XM1040022	THREADED ROD M8-1.25 x 40

REF	PART #	DESCRIPTION
1	XM1041001	SPRING SUPPORT ROD
2	XM1041002	TORSION SPRING
3	XM1041003	SPECIAL HEX BOLT M18-1.5 X 50
4	XM1041004	UPPER BLADE 12"
5	XM1041005	SHEAR BODY (M1041)
6	XPN15M	HEX NUT M18-1.5
7	XM1041007	BLADE FIXING PIN
8	XM1041008	SPECIAL HEX BOLT M14-1.5 X 60
9	XM1041009	HANDLE MOUNTING PLATE
10	XM1041010	HANDLE
11	XPB35M	HEX BOLT M12-1.75 X 40
12	XM1041012	THREADED STOP M12-1.75 X 165
13	XM1041013	SPECIAL HEX BOLT M14-1.5 X 60
14	XM1041014	PIVOT ARM
15	XPB49M	HEX BOLT M12-1.75 X 20
16	XPW06M	FLAT WASHER 12MM
17	XPN42M	HEX NUT M14-1.5
18	XM1041018	LOWER BLADE 12"
19	XM1041019	PIVOT ARM
20	XPN42M	HEX NUT M14-1.5
21	XPW06M	FLAT WASHER 12MM
22	XM1041022	THREADED ROD M14-1.5 X 60

**COPYRIGHT © MAY, 2006 BY WOODSTOCK INTERNATIONAL, INC.**

**WARNING: NO PORTION OF THIS MANUAL MAY BE REPRODUCED IN ANY SHAPE OR FORM WITHOUT**

#8237JK

**THE WRITTEN APPROVAL OF WOODSTOCK INTERNATIONAL, INC.**

Printed in China